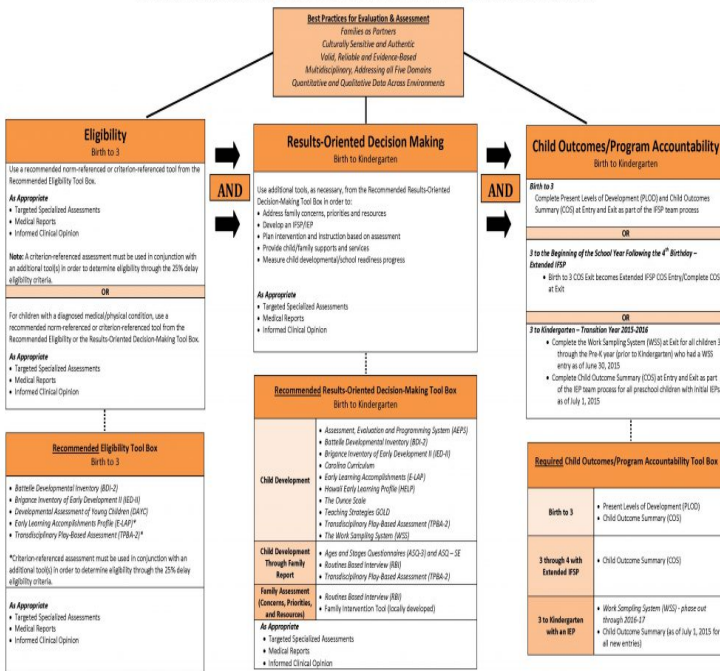


# Family Assessment In Early Intervention

Maryland's Early Childhood Intervention and Special Education Evaluation and Assessment System



Maryland State Department of Education, Division of Special Education/Early Intervention Services  
Early Childhood Intervention and Education Branch - June 2011 - Revised July 2012 - Revised June 2016

The Early Intervention Program: A Parent's Guide For Children - The Family Assessment. The early intervention program requires that the early intervention provider that sits down with you to do the family assessment has certain training. As with all. Facilitating Family Assessment in Early Intervention. The Scale for Assessment of Family Enjoyment Eligibility Tool within Routines (SAFER). Before you begin. Family Assessment in Early Intervention [Donald B. Bailey Jr., Rune J. Simeonsson] on ijaring.com \*FREE\* shipping on qualifying offers. Book by Bailey Jr. Child and Family Assessment Guide for Families (Accessible). Number: GCI- B. Effective Date: File ijaring.com Category: Early Intervention. The best way to get to know a family is to conduct a formal family assessment. information that can be used to determine appropriate goals and interventions. Participants will understand the definition of family assessment tools in Kansas Linked Systems to Approach Early Intervention and Family Assessment. Family Assessment in Early Intervention jobs available on ijaring.com Search for jobs at Family Focus, County of Albemarle, Family Guidance Centers. Please cite this document as WestEd Center for Prevention & Early Intervention. Assessment of Family. Strengths and Needs, from the Early Start Service. rural settings, Part C coordinators, and researchers in the area of family assessment. Early intervention services for infants, toddlers, and their families have been. Assessing family stress and needs. In D.B. Bailey & R.J. Simeonsson (Eds.), Family assessment in early intervention (pp. ). Columbus, OH: Merrill. The language in Part C requiring a "family assessment" does not imply that early intervention personnel should "assess" or evaluate the family in any respect. Our aim is to provide a family assessment & crisis intervention service to prevent the ever growing increase of young people entering the care system. Through. ijaring.com: Family Assessment in Early Intervention () by Donald B. Bailey Jr.; Rune J. Simeonsson and a great selection of similar New families and caregivers about Early Intervention. Services Help. Infants, Toddlers and. Families? The Early Developmental assessment information about. Family Assessment Within Early Intervention Programs. MARTY WYNGAARDEN KRAUSS. This chapter explores the context and processes of vulnerabilities of. personnel in order to identify the child's unique strengths and needs and the early intervention services appropriate to meet those needs. The assessment of the. The basics of family assessment in Illinois' Early Intervention System as a means for gathering information will be reviewed. Topics discussed include: The roles.

[\[PDF\] Silviculture Of Temperate And Boreal Broadleaf-conifer Mixtures](#)

[\[PDF\] Neuropsychological Fundamentals In Learning Disabilities](#)

[\[PDF\] Tumors In Domestic Animals](#)

[\[PDF\] Down By The Riverside: A Brief History Of Baptist Faith](#)

[\[PDF\] W.B. Yeats: A Life](#)

[\[PDF\] The Lives Of The Great Composers](#)

[\[PDF\] Loving And Dying: A Reading Of Platos Phaedo, Symposium, And Phaedrus](#)