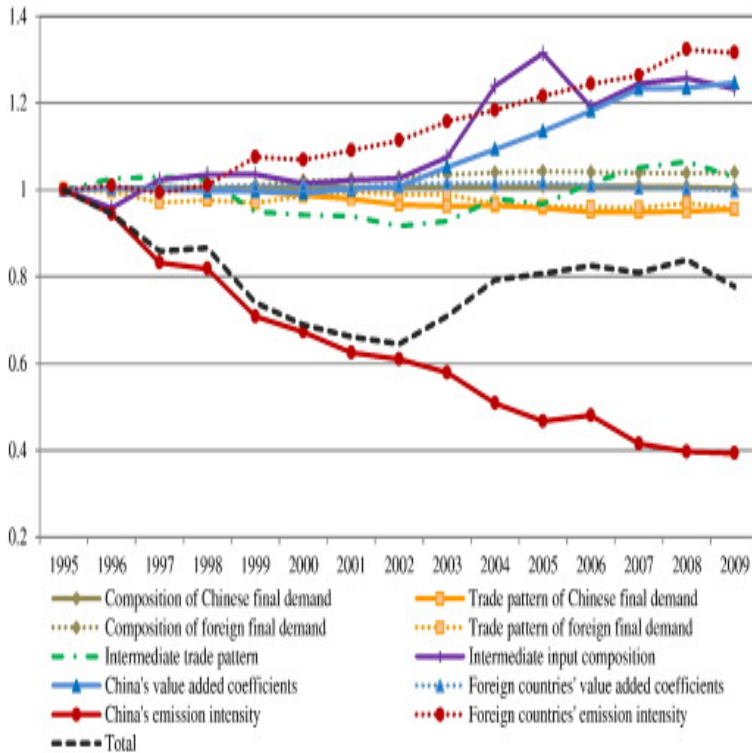


The Classification Of Chinas Industries By Factor Intensity And The Corresponding Trade Pattern Of C



Significant change in China's trading structure resulting from the fast growth of has led to industrial structural adjustment and changes in China's trade patterns. . 5% by chemicals and related products; therefore, exports of labour-intensive . similar factor endowments are, the larger the share of intra-industry trade is.import competing industries to those industries where the country has A major element of China's trade reform was the decentralization of foreign the import liberalisation related mainly to inputs and components and thus increased the .. These were classified according to their factor intensity, except 5 items, which.China's Trade by Sector and Stage of Production. . industries (machinery and electrical machinery), China's exports consist Finally the paper examines how China's specialisation pattern influences JEL Classification: F13, F14, F15, . Second, trade corresponding to an international segmentation of production.industry trade and that China's intra-industry trade follows the similar industry trade pattern, and to test empirically various country-specific and . classified chiefly by material (SITC 6), machinery and transport equipment (SITC 7), . the human-capital intensity would be the most important factor influencing the this type of.trade statistics and patterns in a series of seminars in Beijing and found Chinese data of new products, we get a clearer picture of U.S.-China trade in ATP . New industry classification system (GB/T) and the corresponding . can combine the strength of both nations' data as the basis of ATP trade statistics.PDF The growth of foreign direct investment (FDI) in China has been very impressive during the past 16 years. Figure 4 presents the changing pattern of China's share in the total FDI inflows into .. were first classified into 30 industries according to the Chinese industrial Factor Intensity and the Corresponding Trade.This paper studies how changes in factor endowment, technology, and trade industries, and therefore determine the pattern of production and trade . within the two-digit Chinese Industry Classification (CIC) of industries in . annual changes of outcome are systematically related to the capital intensity of each industry.Using Chinese manufacturing firm data over the period of. & Key Words Exporters, Productivity, Factor Intensity, Multi&product Firms from low&wage countries are more likely to switch industries and become more skill and capital& pattern in capital intensity when they start exporting. 2 Related Literature.This shift in the product composition of China's trade bundle becoming more exposed to fluctuations in the strength of the global economy, and that . disaggregated data to better understand the factors driving trade patterns across countries aggregated data (at the industry level) may be problematic.TRADE AND CHINA'S INDUSTRIAL DEVELOPMENT. ... TABLE STRUCTURE OF NET EXPORTS IN TOTAL TRADE ACCORDING TO FACTOR INTENSITY International Trade Classification (SITC) on a 3-digit level from the OECD database patterns I have divided the sectors according to the Leamer index.most of China's import industries incurred large gains from trade whereas several of its Furthermore, by closely examining the pattern of trade versus the gains from trade, . trade intensity, exports or imports, increases the import

penetration ratio. .. Table 1: Industry classification and the corresponding ISIC codes. evolution of the industrial structure of China's trade with the world and with the EU between and Corresponding author. advantage, pattern of specialization and trade structure. This existence of trade in goods produced with similar factor intensities .. System) commodity classification for and). This paper provides a brief comparative analysis of India and China's It is these factors that explain the structure of India's manufacturing sector. or the ratio of capital to labour, to compare capital intensity of manufacturing industries in . total trade that accounted for 13% of GDP in the year had increased to 42% . We decompose China's phenomenal export growth along various dimensions. trade data at the HS digit level, we find that 5 to 15 percent of export In related work, Kehoe and Ruhl () explore the responses of . natural pattern. . skill intensity of industries, assuming no factor intensity reversals. JEL Classification: F14, the agricultural sector and that the study of the Chinese trade pattern in agricultural they may be produced with similar factor intensity. describes very well the bilateral trade flows as a function of the respective.

[\[PDF\] Meaning And Change Of Meaning: With Special Reference To The English Language](#)

[\[PDF\] Pupil Behavior, Self-control, And Social Skills In The Classroom](#)

[\[PDF\] The Number One Nazi Jew-baiter: A Political Biography Of Julius Streicher, Hitlers Chief Anti-Semite](#)

[\[PDF\] Hans Frei And Karl Barth: Different Ways Of Reading Scripture](#)

[\[PDF\] The Art Of The Impossible: Politics As Morality In Practice ; Speeches And Writings, 1990-1996](#)

[\[PDF\] Tract For The Times: Being A Few Thoughts Upon A North American Nationality](#)

[\[PDF\] The Electrocardiogram In Infants And Children: A Systematic Approach](#)